

Infinitem X6/X8 support structure

The Infinitem X6/X8 support structure is a modular stand-alone solution for solar only and solar hybrid energy systems. Rigid, easy to install and extendable, ensuring a solid foundation for your system. The smart design and the use of pre-coated zinc-aluminium-magnesium steel contributes to an extremely reliable, durable basement for your stand-alone energy system.

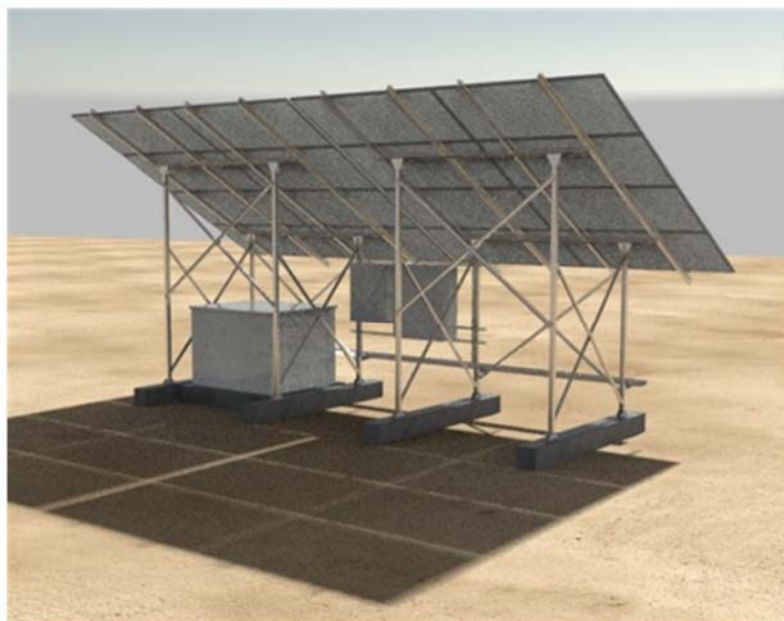


Modular set-up

Modular design for 6 or 8 PV solar modules. Suitable for different size of PV solar modules due to its' smart slide/clamp construction. Available for tilt angles 10°, 20°, 30° or 40°.

Extremely reliable and durable

Made of pre-coated zinc-aluminium-magnesium steel. With an expected long-lasting lifetime of up to 31 years in an industrial and coastal environment. Extremely stable and stiff innovative design due to double bolt connections in combination with cold-formed profiles.



Reducing cost

Integrated facilities for mounting enclosures for control/telecom equipment and cable trays, which saves cost and space due to eliminating the need for separate control racks and facilities for attaching cables minimizing cable lengths.

As the support structure and PV solar modules act as a sunshade all equipment underneath will be protected against direct sunlight.

Infinitum X6/X8 support structure

Characteristics	
Minimum PV solar module size (LxWxH)	1505 x 958 x 30-42 mm
Maximum PV solar module size (LxWxH)	2120 x 1118 x 30-42 mm
Amount of PV solar modules	6 (X6) or 8 (X8)
Material	Magnelis S250GD-ZM310 or equal
Mounting material	Zinc Flake 8.8 isometric bolts, nuts and washers
Environmental classification according ISO 12944-2	C4: suitable for industrial and coastal environments
Durability @ C4	Up to 31 years (*)
Available tilt angles	10°, 20°, 30° or 40°
Maximum allowable wind speed	102 km/hr

(*) as a comparison hot dipped galvanized steel has a durability up to 22 years

Additional data	
Max. length of profiles	3 m.
Fixation to foundation	2x M12 bolts per foot plate
Earth bolt connection	2x M8 bolt

Dimensions and weight	
For X6 support structure, 10° tilt (max. size PV solar module)	
Dimensions (LxWxH)	Approx. 4.20 x 2.74 x 3.45 m.
Weight (excl. PV solar modules)	193 kg.
For X8 support structure, 10° tilt (max. size PV solar module)	
Dimensions (LxWxH)	Approx. 4.20 x 2.93 x 4.56 m.
Weight (excl. PV solar modules)	206 kg.

Options	
Cable tray, including brackets	
Anti-theft bolts (for PV solar modules)	
Construction for mounting enclosures	