









TSS Remote Monitor

TSS remote monitor is a cloud-based platform built on the latest techniques to proactively monitor, analyse and optimize the performance of your solar and hybrid energy system by ensuring a high security to provide safe, reliable and trustworthy solution. The real time performance data and alarms (colour coded to indicate health status), allows for faster response to site critical failures, more efficient preventive maintenance scheduling and reduced frequency of site visits overall.



-  Ability to stream real time data upon opening live monitor. Provision to store and forward data in case of loss of connectivity
-  Receive instant notifications and alarms when certain thresholds are triggered
-  Possibility to view historical data up to 7 years based on data points
-  Preferred interval can be chosen. High resolution of up to 20 samples per second
-  TSS systems monitored through TCP/IP Modbus, with provision for several other protocols such as OPC- UA , SMTP/GPIO, BACnet/IP Siemens or Ethernet/IP protocol
-  Optional possibility to upgrade for access to customized report on system performance for predictive and preventive maintenance

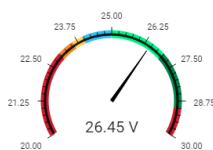
Creating a solid and highly efficient solar energy system to keep you going ...Always!

Specifications

Ethernet Ports	5 × GbE (4 × LAN, 1 × WAN), 1x USB 2.0
Power Consumption	10W max
Power Supply	9.6 - 28.8 Vdc
Temperature Range	-20 °C to 65 °C
Size	95 × 116 × 28mm (excl. DIN rail clip)
Degree of Protection	IP20
Standards	IEC 60950-1
Processor	MIPS 800 MHz
Protocols	FDD - LTE - B1,B2,B3,B4,B5,B7,B8,B12,B13,B18,B19,B20,B25,B26,B28 TDD - LTE - B38,B39,B40,B41 WCDMA - B1,B2,B4,B5,B6,B8,B19
Optional	GSM/GPRS/EDGE - 850,900,1800,1900 MHz
Mounting	DIN rail
Certificates	CE, cULus Listing, FCC Verification, REACH
Weight	270-310 grams

Data Visualization

Battery voltage



Solar status

👍 Day

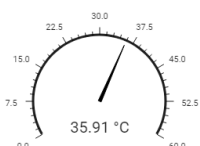
Load status

👍 Powered

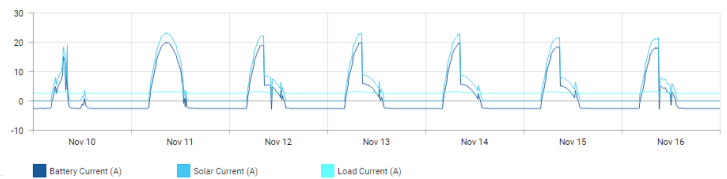
Battery Temperature

35.91 °C

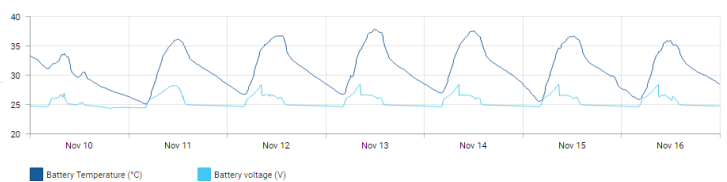
Battery temperature



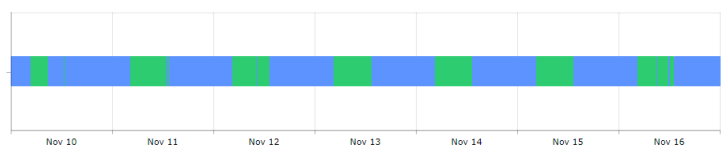
System currents



Battery status



Battery status



Average battery current	1.31 A	Maximum battery current	20.10 A	Maximum battery voltage	28.48 V
Average solar current	4.04 A	Maximum solar current	23.30 A	Minimum battery voltage	24.32 V
Average load current	2.72 A	Maximum load current	3.40 A		

This datasheet is not legally binding. Actual specifications and/or product features may vary. TSS4U reserves the right to make changes to specifications without notice. Caution: Read the safety and installation instructions before using the product. The currently valid warranty/guarantee declaration and the general delivery terms and conditions are part of this datasheet. Further details can be found on our website www.tss4u.com